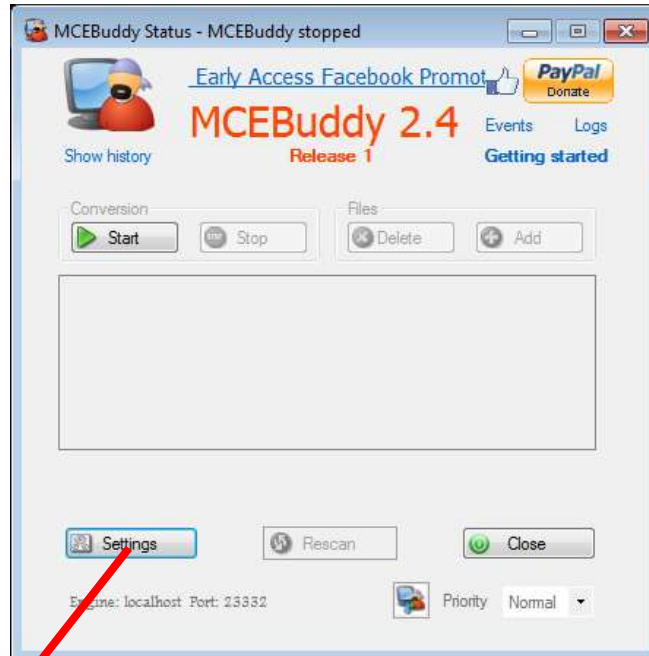


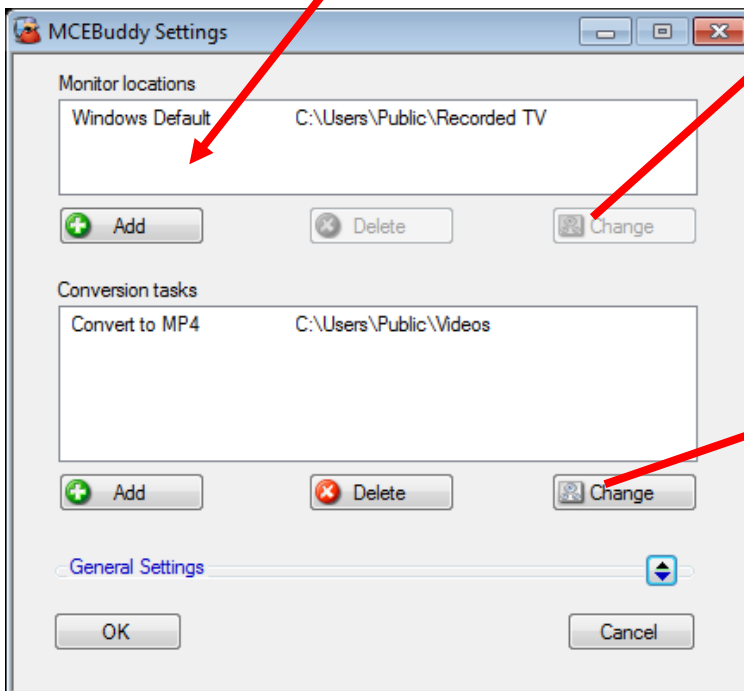
# 1 Quick Start Guide

## 1.1 Getting Familiar with the 4 Main Screens in MCEBuddy 2.x

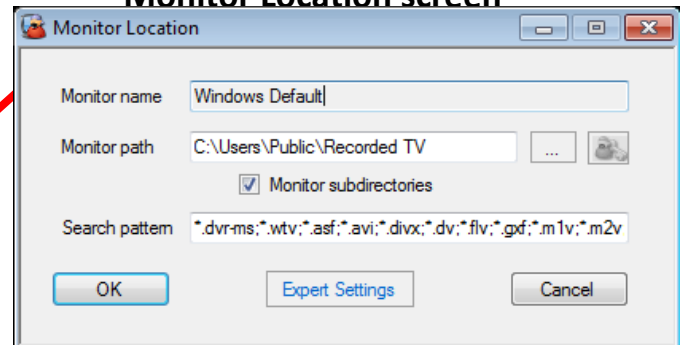
### Status screen



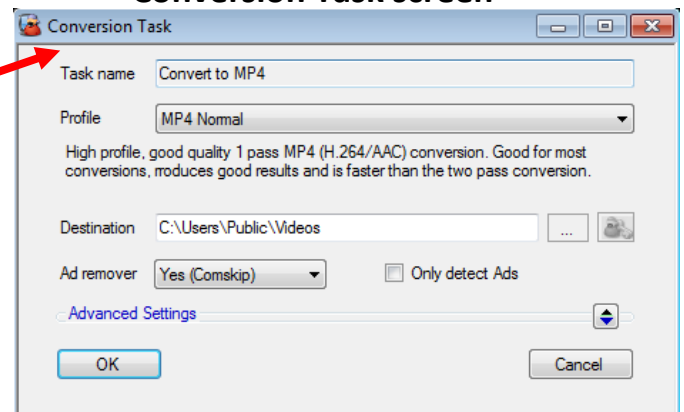
### Settings screen



### Monitor Location screen



### Conversion Task screen

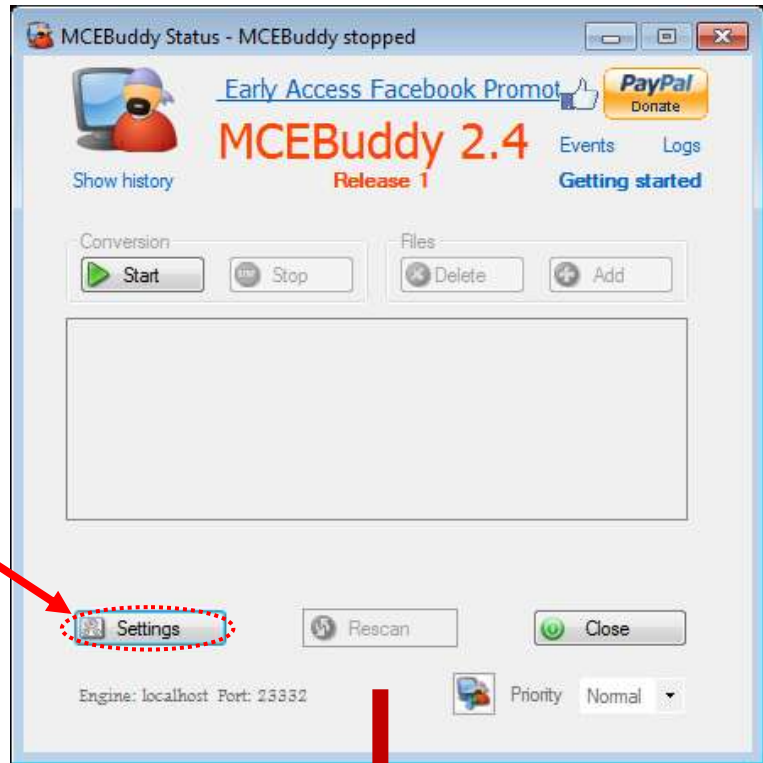


## 1.2 Getting Started with MCEBuddy

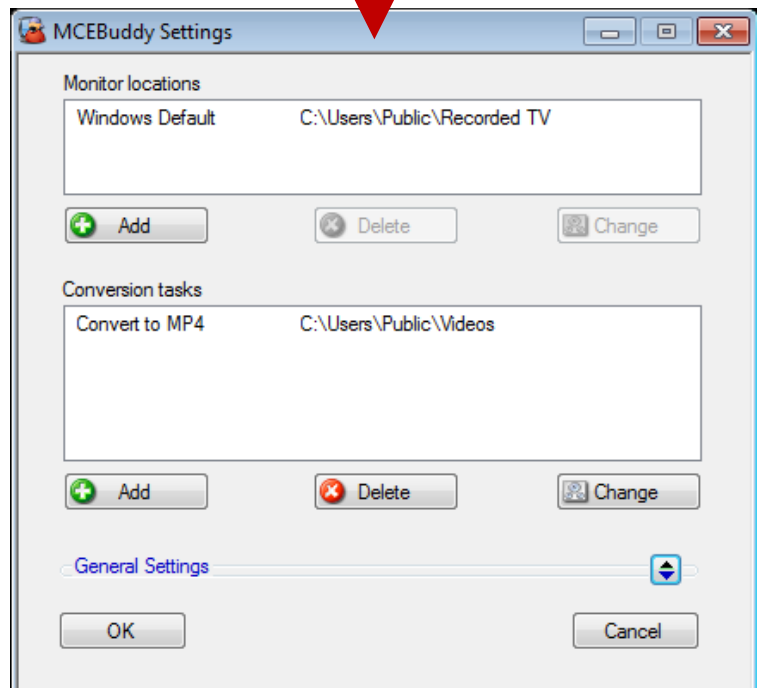
Start *MCEBuddy* from the Window Start Menu

This will open a new window (*MCEBuddy Status*)

Click on the "Settings" button



This will open a new window (*MCEBuddy Settings*)

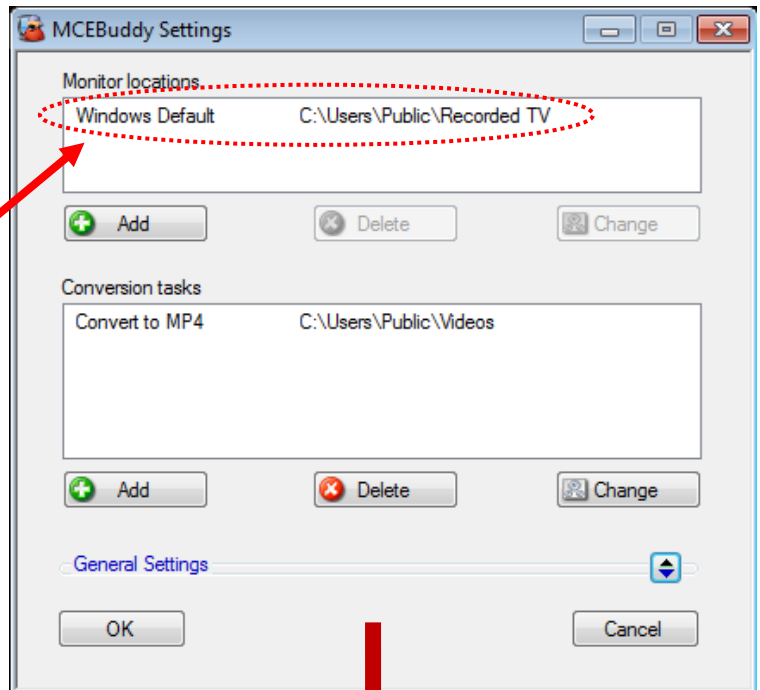


### 1.3 Automatic Conversions

Now we need to tell MCEBuddy the location of the video files to convert.

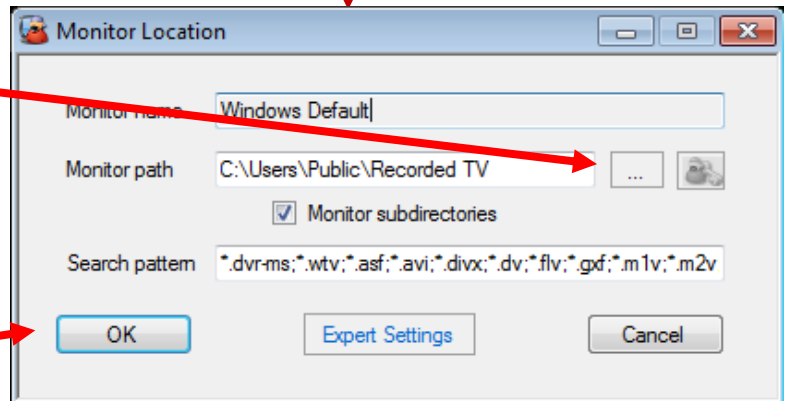
MCEBuddy will keep monitoring this location for new video files every few minutes and will convert it automatically whenever it finds one.

1. **Double click on "Windows Default"**



This will open a new window (*Monitor Location*)

2. **Click on the "..." button and select the location where MCEBuddy will look for new videos**

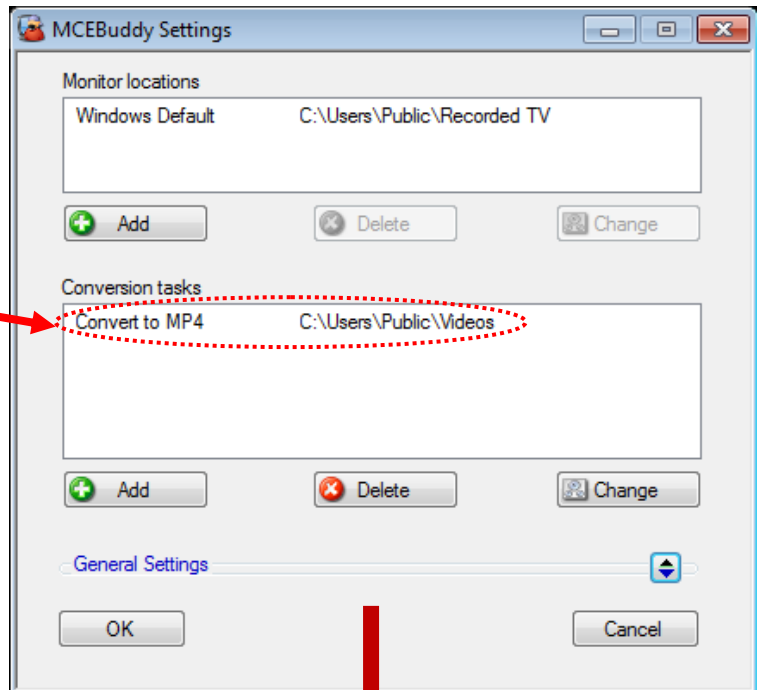


3. **Click on the "OK" button**

## 1.4 Removing Commercials and Specifying Destination Location

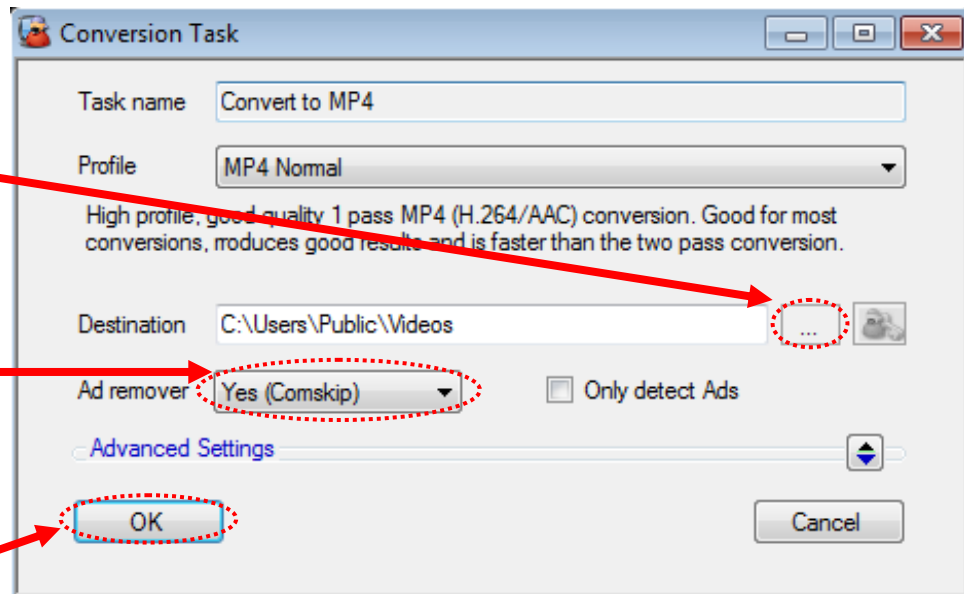
Now we need to tell MCEBuddy the location where to put the converted files and whether it should remove commercials while converting the video.

1. Double click on "Convert to MP4"



This will open a new window (Conversion Task)

1. Click on the "..." button and select the location where the converted files will be placed
2. Select "Yes (Comskip)" if you want MCEBuddy to remove commercials/advertisements while converting the videos. Select "No" if you want to keep the commercials in the converted videos.

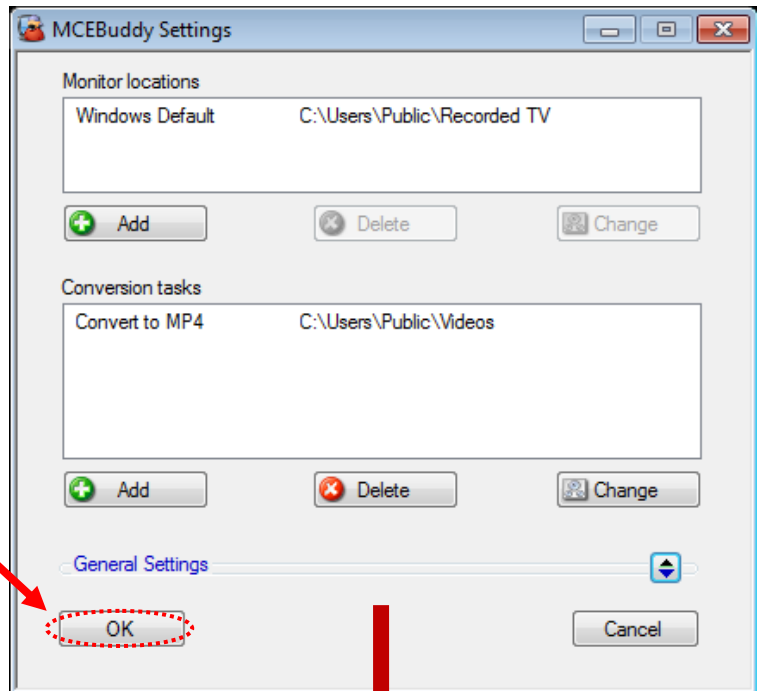


3. Click on the "OK" button

## 1.5 Running MCEBuddy

You're back to the "MCEBuddy Settings" page.

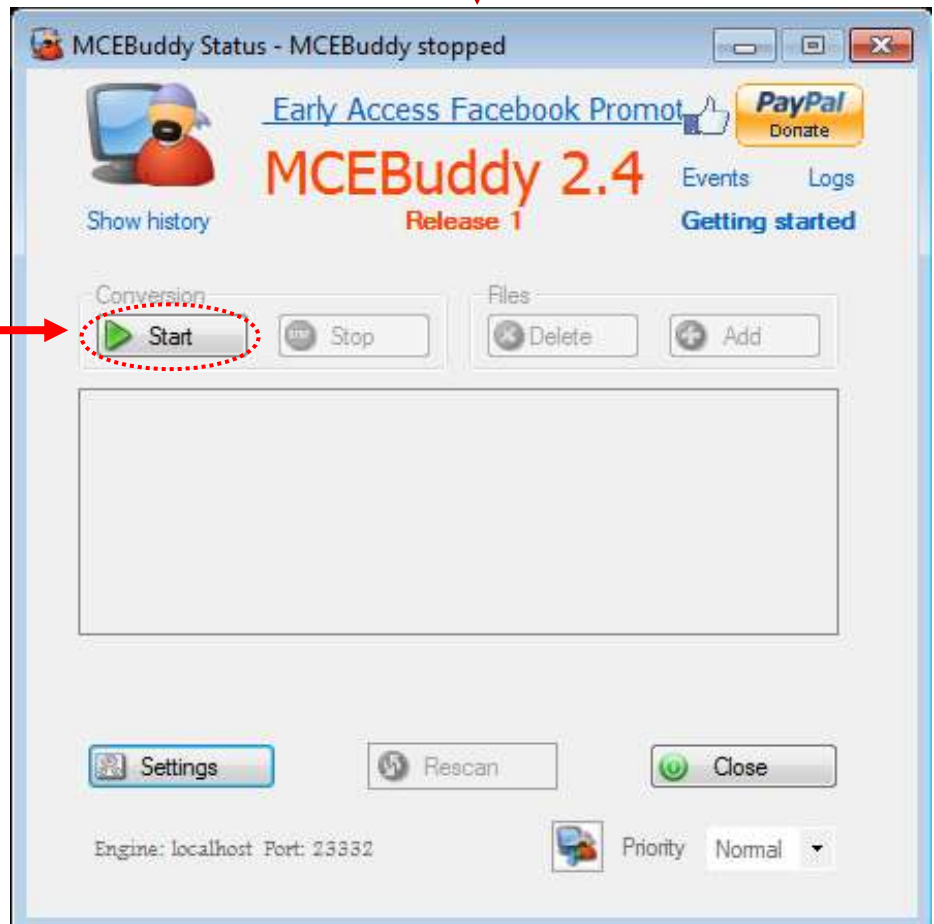
1. Click on the "OK" button



Now you are back at the "MCEBuddy Status" screen.

- Click on the "Start" button

If you would like to convert a file right away, simply drag and drop to the middle of the window.



## You're All Set!

If you have any files in the "Monitor Locations" folder, they should start converting automatically

You can pause conversions by clicking the "Pause" button and resume again by clicking the "Resume" button. You can stop conversions by clicking the "Stop" button and start again by clicking the "Start" button

This box shows a list of all the files in queue to be converted. *Right Click* on the file for more options.

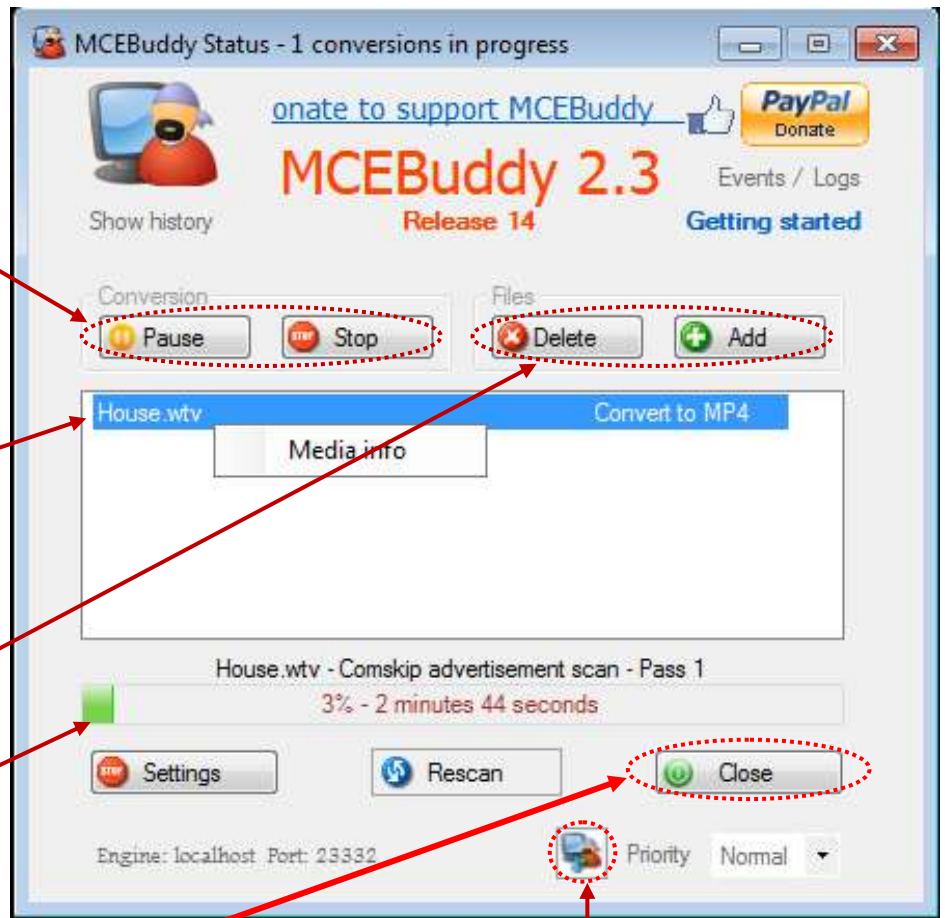
You can add/delete files to be converted manually using these buttons

This bar shows the current progress/activity of the file being converted

**Click on the "Close" button to close this window**

MCEBuddy will continue its conversions in the background even after the window is closed.

You can always click on *MCEBuddy* from the Windows Start Menu to return to the "MCEBuddy Status" window to check on the status of the conversions.



Click here to connect to a MCEBuddy engine on a different computer

## 2 Advanced Settings

**REMEMBER:** You can ALWAYS rest your mouse over ANY Text, Button or CheckBox to get INSTANT POP-UP help on the item.

Refer to the Wiki (<https://mcebuddy2x.codeplex.com/documentation>) for more details.

Click on the "Add" button under "Monitor locations" to add more locations of video files for MCEBuddy to monitor for automatic conversions.

Right click on a task to enable or disable a task.

Click on the "Add" button under "Conversion tasks" to add additional conversion tasks. For each conversion task MCEBuddy will process the video file in the queue.  
e.g. – If there are 2 conversions tasks, MCEBuddy will create 2 converted files for each file in the queue.

Click to open the "General Settings" section

Delete the original video after a successful conversion

Time to wait before converting a video

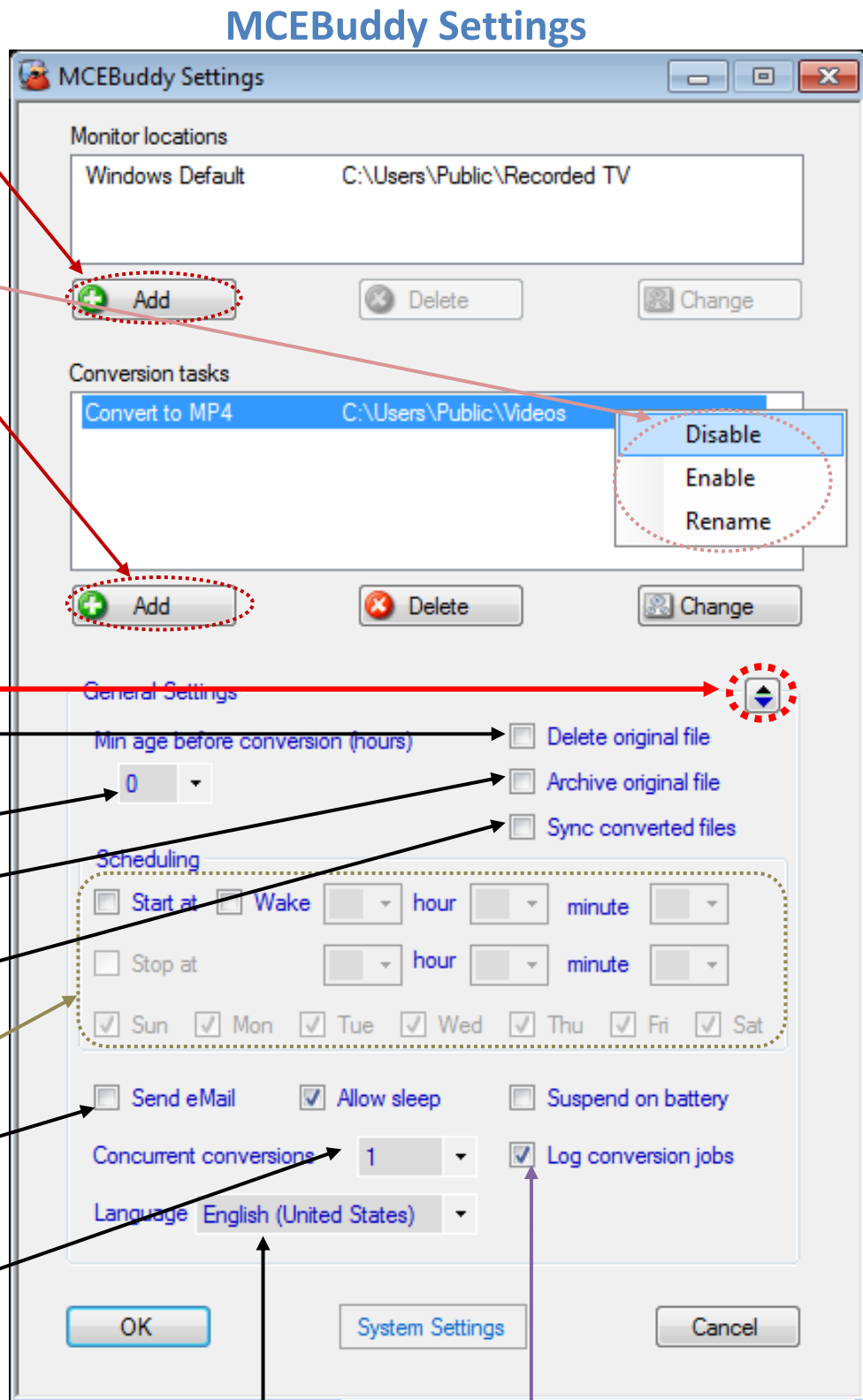
Move the original video to the MCEBuddyArchive folder after a successful conversion

When source file is deleted, converted files are also deleted

You can use these to schedule conversions

Send an eMail after a successful/unsuccessful conversion

MCEBuddy can do more than one conversion simultaneously



Change the language for MCEBuddy

Logs can help to isolate problems with conversions. The logs folder can be opened by clicking on the "Logs" text on the top right corner of the "MCEBuddy Status" window



# Conversion Tasks

Enter a unique name here to identify the task

Select the base profile used to convert the videos. You can create/customize these profiles

Use this button to enter the username/password if the output is a network drive

Click to open the "Advanced Settings" section

Adding converted file to libraries

Converted file renaming options. Use this to create custom file names

Convert videos who's filenames matches this pattern

Convert videos who's Showname/Title matches this pattern

Convert videos who's recording Channel matches this pattern

Convert videos of this type

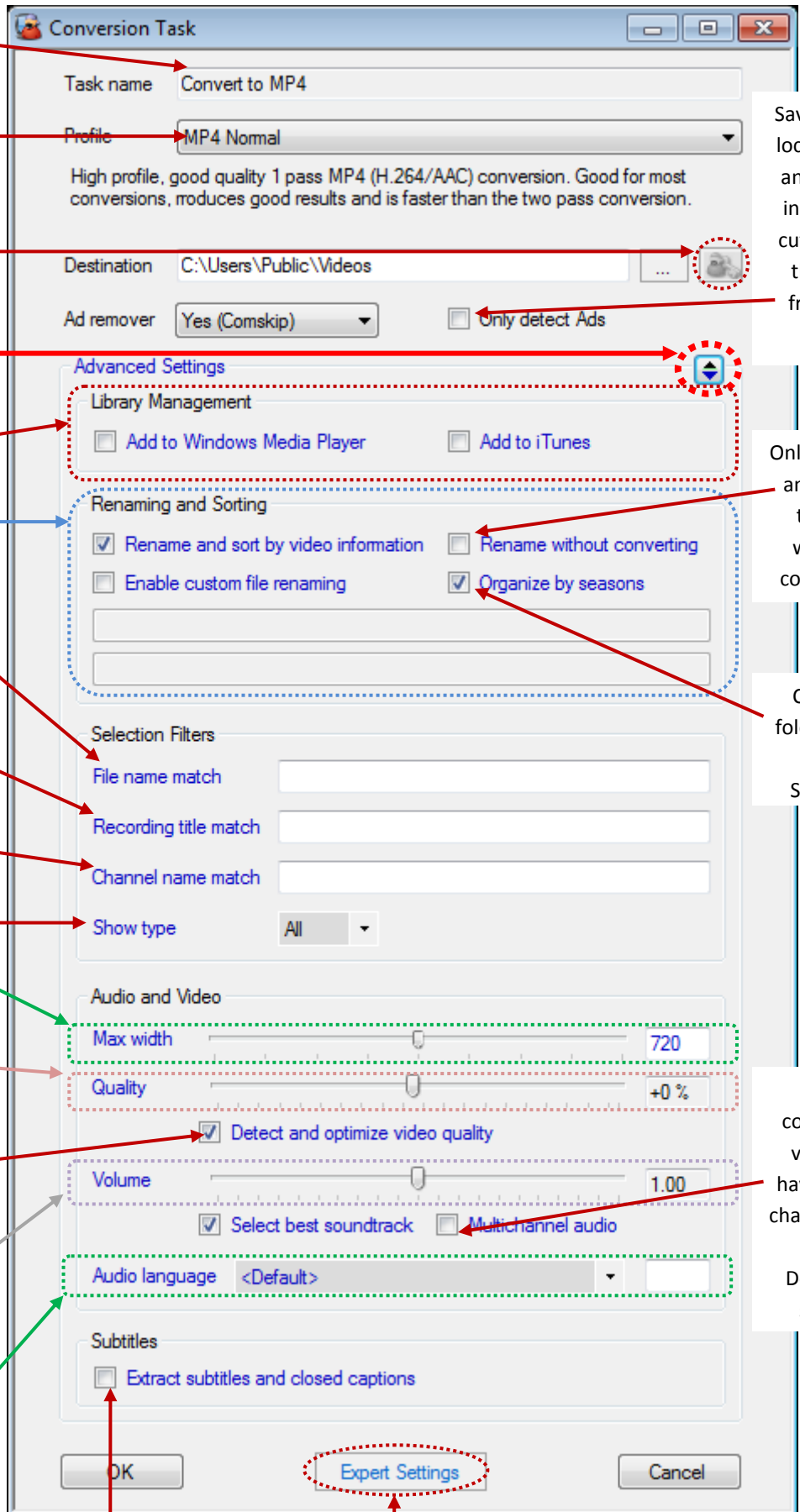
Maximum width of converted video

Increase or decrease Quality of the converted video

Automatically detect and optimize video conversion quality (deinterlacing, telecine etc)

Increase or decrease the audio volume of the converted video

If a video has multiple audio tracks select the audio track language or enter the 3 digit language code. Right click on the file in the queue on the "MCEBuddy Status" page to get the audio language details and codes (Refer to Getting Video Properties below)



Save the Ad locations in an EDL file instead of cutting out the Ad's from the video

Only rename and move the file without converting

Create folders for each Season

Allow converted video to have multi-channel (5.1) audio. Default is stereo

Extract the Closed Captions into a SRT file

More advanced settings around metadata, banners, subtitles, chapters, embedding, trimming, queue ordering, cropping, audio sync, cropping, TiVO MAK, task management, custom Comskip INI's etc

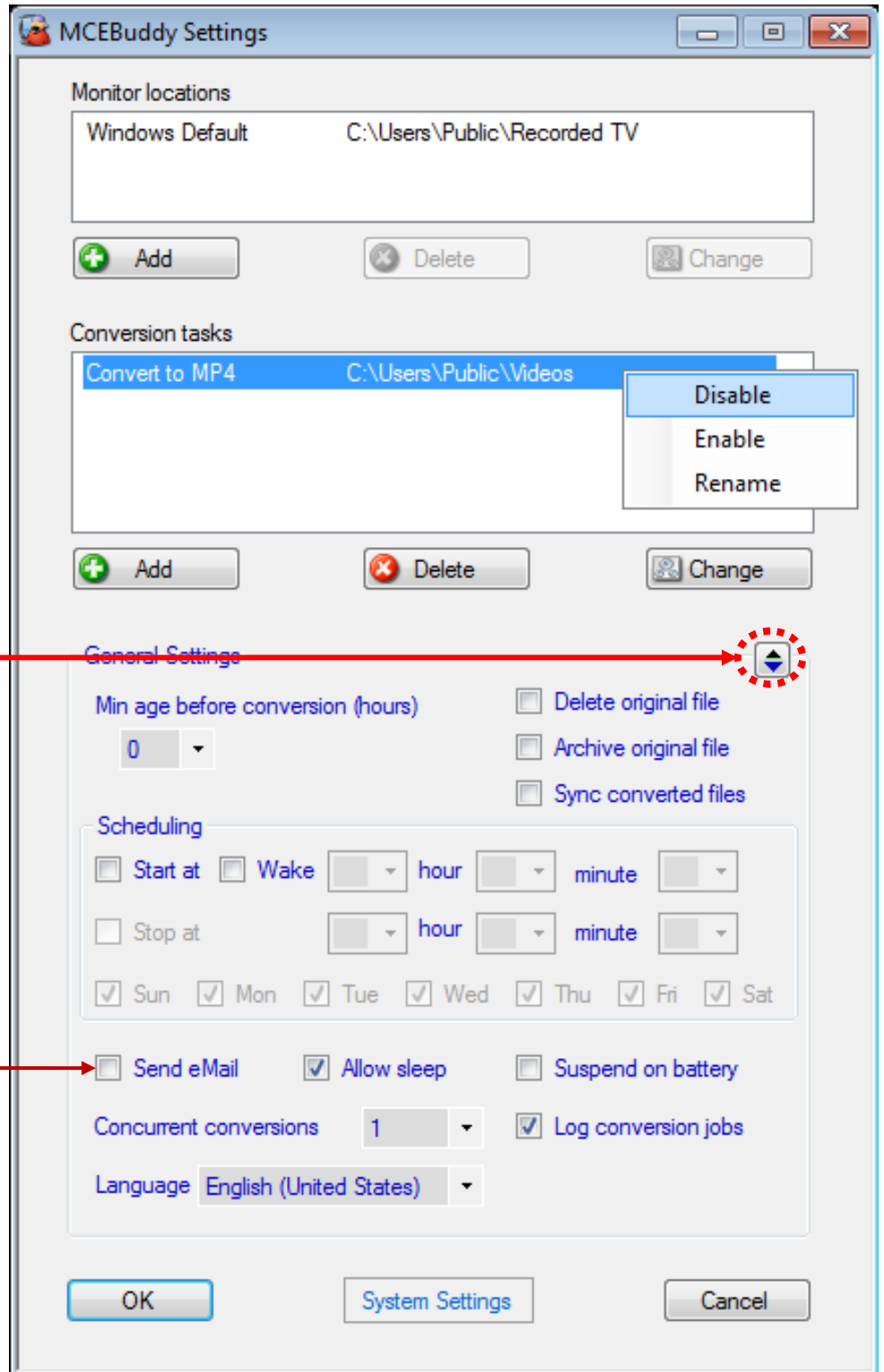


# Configuring eMail Notifications

You configure MCEBuddy to send eMails at different stages of the conversions (start, failed, successful, cancelled etc)

Click to open the "General Settings" section

Click "Send eMail" to bring up eMail settings



This will bring up the eMail settings (SMTP) window.

Enter the server name, port, SSL, username, password, from and to eMail addresses.

You can enter multiple *To eMail* addresses each separated by a ;

Select the events on which you want MCEBuddy to send an eMail

Click the *“Test”* button to test the settings

e-Mail Settings

SMTP Server Name  Port   Use SSL

Username

Password

Confirm Password

From <e-Mail>

To <e-Mails>

Send eMail on adding a conversion to the queue

Send eMail on start of conversion

Send eMail on successful conversion

Send eMail on failed conversion

Send eMail on cancelled conversion

Send eMail if unable to download series information

# Getting Video Properties

Right click on the file in queue on the "MCEBuddy Status" window and click on *Media Info* to get video properties



This will pop up a window that shows the Audio/Video Information for that file. Each file will have a Video and may have multiple Audio languages

Video Properties

Audio Language

This used while selecting the *Audio Language* in the "Conversion tasks" window

Language code (3 digit)

This used while selecting the *Audio Language* in the "Conversion tasks" window

